



MANHOLE LIFT SYSTEM

SIMPLE * SAFE * QUICK * INEXPENSIVE

Providing products and services that protect our planet's clean water supply.



An easy method of placing precast concrete manhole components in the field.

Over 18 years of Proven Performance.



PRESS-SEAL GASKET CORPORATION

P.O. Box 10482, Fort Wayne, Indiana 46852
Phone: (260) 436-0521 (800) 348-7325 Fax: (260) 436-1908 E-mail: sales@press-seal.com Web: www.press-seal.com

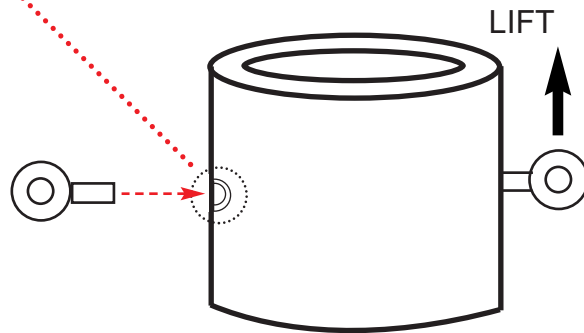
DESIGN CRITERIA

Press-Seal Gasket provides customized design guidelines to each precaster for the use of the lift system with their particular product line and designed for its theoretical load capacity for both tensile and shear forces.



The lift inserts are designed in accordance with ASTM C-890 for four times the maximum load.

Each lift eye is designed, rated and tested to a lift capacity of 3,600 pounds with a factor of safety of five.



The maximum weight of a product for a two-lift eye system is 7,200 pounds.

The lift system works best when inserts are placed perpendicular to the wall with the lift parallel to the wall. This method insures a safe lift and does not damage the product. Special designs can be provided for product made with more than two lift inserts.

As a service to its customers, Press-Seal Gasket will determine recommended lift insert locations and maximum lift capacity for the system based on the product's geometric configuration and material properties. When requested and supplied, these designs will incorporate appropriate safety factors for lifting devices, but obtaining critical manufacturing strengths and tolerances is outside of Press-Seal Gasket's capability and responsibility. The precaster is advised that a four thousand psi minimum design concrete compressive strength is required and lift insert positioning are critical for the safe and successful performance of this system.



PRESS-SEAL GASKET CORPORATION

P.O. Box 10482, Fort Wayne, Indiana 46852

Phone: (260) 436-0521 (800) 348-7325 Fax: (260) 436-1908 E-mail: sales@press-seal.com Web: www.press-seal.com

MANUFACTURING

The manufacturing process is simple and fast:

- * Place plastic insert over the assembly fixture
- * Lock in place
- * Install the combined fixture and insert in the casting form
- * Secure in place
- * Place concrete
- * Remove forms

Insert is now an integral part of the manhole and can be used for installation.

FAST



EASY



VERSATILE



**USE ON ANY WET CAST OR
DRI-CAST PRODUCT**

A complete Lift System Design and Installation Manual is available from Press-Seal Gasket Corporation for guidance and technical assistance in the proper placement of the inserts in the precast manufacturing process.



PRESS-SEAL GASKET CORPORATION

P.O. Box 10482, Fort Wayne, Indiana 46852

Phone: (260) 436-0521 (800) 348-7325 Fax: (260) 436-1908 E-mail: sales@press-seal.com Web: www.press-seal.com

INSTALLATION

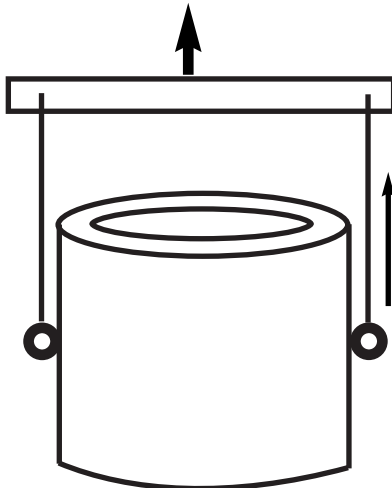
Manhole components are delivered to the field with all inserts installed and positioned for quick lifting and installation.



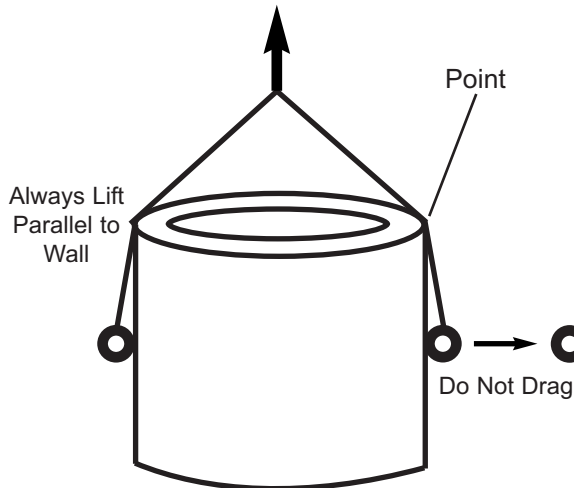
FROM THE TRUCK TO THE DITCH

- * Insert a lift eye into each insert.
- * Turn the lift eye 90 degrees to the vertical position to lock it in place.
- * Place hooks in lift eyes and lift.

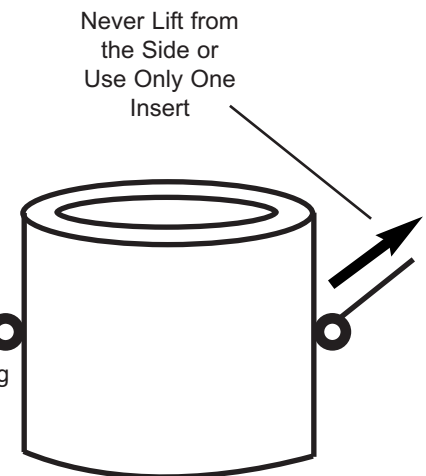
Do's and Don'ts



Spreader Bar Lift



Single Point Lift



Not Permitted

Copyright 2005 Press-Seal Gasket Corporation

Press-Seal believes all information is accurate as of its publication date. Information, specifications, and prices are all subject to change without notice. Press-Seal is not responsible for any inadvertent errors.



PRESS-SEAL GASKET CORPORATION

P.O. Box 10482, Fort Wayne, Indiana 46852

Phone: (260) 436-0521 (800) 348-7325 Fax: (260) 436-1908 E-mail: sales@press-seal.com Web: www.press-seal.com